



To meet the *American Journal of Botany* quality standards for publication, authors need to submit digital art that conforms to the appropriate resolution, color mode, and file format. Doing so will help avoid delays in publication and maximize the quality of images in both the online and print journals.

Color Mode: All color image files are required to be submitted in their original RGB color. Whenever possible, the submitted RGB image should be tagged with the originating ICC profile to ensure the best possible conversion to CMYK for the printed journal.

Format and Style: Use consistent style, font, and font size (between 6 and 10 pt.). Standard fonts such as Arial, Helvetica, Times, Symbol, Mathematical Pi, and European Pi are recommended. For vector application files, convert fonts to outlines (Adobe Illustrator) or embed fonts (MS Office). See the next page for instructions on converting fonts to outlines with Adobe Illustrator** and embedding fonts in Microsoft Office applications***.

- **Sizing:** Prepare figures at the final publication size: either one or two columns wide and less than the length of the page. Dimensions: width—8.9 cm (3.5") for one column or 18.4 cm (7.5") for two columns; length—less than 21.6 cm (8.5")
- **Figures with multiple elements (photos, drawings, or graphs):** Group elements in a rectangle or square and label the top left corner of each element with a capital letter (e.g., A, B). Photographs in a composite plate should each be numbered and separated by a thin line or blank space.
- **Label axes:** Include Standard International Units of measure in parentheses; capitalize only the first letter of the first word, e.g., Stem growth (%).
- **Magnified illustrations:** Provide a scale bar defined in either the figure itself or at the end of the legend.

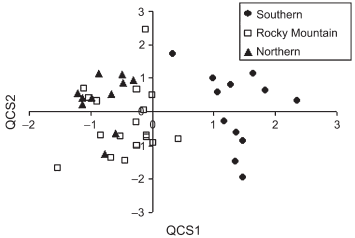
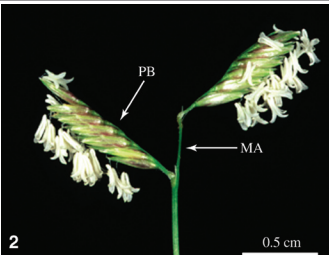
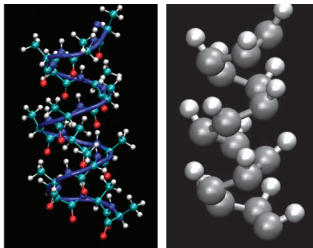
Cover Images: You are invited to submit one or more color photographs (or artificially colorized photomicrographs) to be considered for a cover illustration. Submit these online with your original submission or revised manuscript. The image must be at least 300 dpi and slightly larger than 23.65 cm high x 19 cm wide.

Resolution and Raster Images: Low-resolution images are one of the leading causes of art resubmission and schedule delays. It is important that raster images meet the minimum resolution requirements. Raster images can be classified as monochrome, halftone, or combination halftone.

- **Monochrome (1-bit) images:** Common examples are graphs and charts made of solid black and white, with no gray values. The preferred resolution for this type of image is between 1000 and 1200 dpi at publication size. The preferred file format is TIFF, but PDF and EPS formats are also accepted.
- **Halftones:** Common examples are color or grayscale figures containing pictures only, with no text or thin lines. The suggested minimum resolution for this type of image is 300 dpi at publication size. The preferred file format is TIFF, but EPS, PDF, and JPEG* are also accepted.
- **Combination Halftones:** Common examples are color or grayscale figures containing halftone and line art elements. The preferred resolution for this type of image is between 600 and 900 dpi at publication size. The preferred file format is TIFF, but EPS, PDF, and JPEG* are also accepted.

*JPEG format is acceptable, but only if the guidelines at

http://dx.sheridan.com/guidelines/tsg_preflight_solutions_3.pdf have been followed.

Monochrome	Combination Halftones (grayscale or color images with type)	Halftones (grayscale or color images without type)
		
1000 - 1200 dpi	600 - 900 dpi	300 dpi

Vector Graphics: Vector images typically are generated using drawing or illustration programs (e.g., Adobe Illustrator) and are composed of mathematically defined geometric shapes—lines, objects, and fills. Vector graphics are resolution independent and can be sized up or down without quality loss.

- **Vector Line Art:** Common examples are graphs and charts created in illustration programs. Preferred when saved as an EPS file, with all fonts converted to outlines**, and graph lines at least 0.25 point wide.
- **Combination Line/Halftone:** Common examples are color or grayscale figures containing halftone and line art elements. The halftone elements should be processed in Photoshop and the line elements in Illustrator, and then the two elements should be combined in Illustrator. The preferred file format is EPS, with all fonts converted to outlines** and graph lines at least 0.25 point wide.

**Guidelines for converting fonts to outlines in Adobe Illustrator can be found at:

http://dx.sheridan.com/guidelines/tsg_preflight_solutions_1.pdf

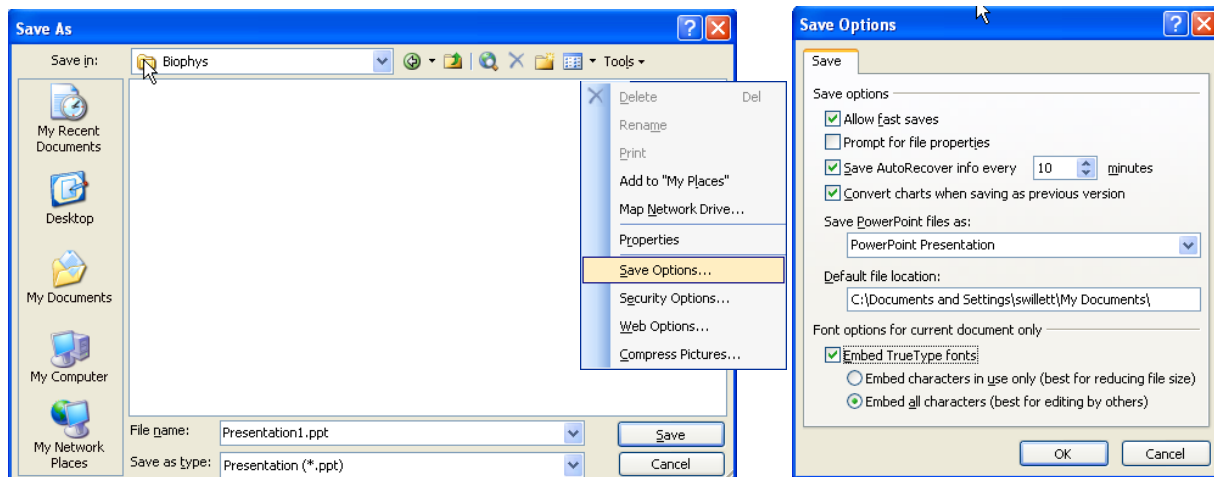
- If fonts have not been converted to outlines always choose to embed fonts when saving files from your application.

Microsoft Office: PowerPoint slides, Excel graphs, and images embedded in Word are acceptable formats. When creating the original file in a Microsoft Office application, please follow these general rules to ensure that the initial file is properly prepared:

1. Do not use pattern or textured fills in graphics. Instead, use solid fills or percentage screens that will be effectively converted to vector images during file conversion. **Note:** A 20% difference in percent screens is most effective for differentiation.
2. Artwork placed within any MS Office application should be of acceptable minimum resolution for print production: 300 dpi for halftones, 600–900 dpi for combinations and 1000–1200 dpi for line art.
3. When inserting pictures/images into files, be sure to select “insert” and not “insert link”, which will not properly embed the high-resolution image into the MS Office file.
4. Always embed fonts in your documents. See guidelines for embedding fonts in MS Office documents.***

*****Embedding Fonts in MS Office:**

- From the file menu, select Save As.
- On the toolbar, select “Save Options,” select the “Embed TrueType Fonts” check box, and select “Embed all characters (best for editing by others).”



Authors who do not comply with these guidelines will be asked to resubmit their figures in a print-quality format, which may delay publication.

For more information on digital art, visit http://dx.sheridan.com/guidelines/digital_art.html

To check/preflight your digital art files before submission, visit <http://dx.sheridan.com/onl/rgb/>